

Technical drawing of a mechanical assembly, likely a pump or motor, showing a cross-section and a side view. The drawing includes various callouts and dimensions.

Callouts and Dimensions:

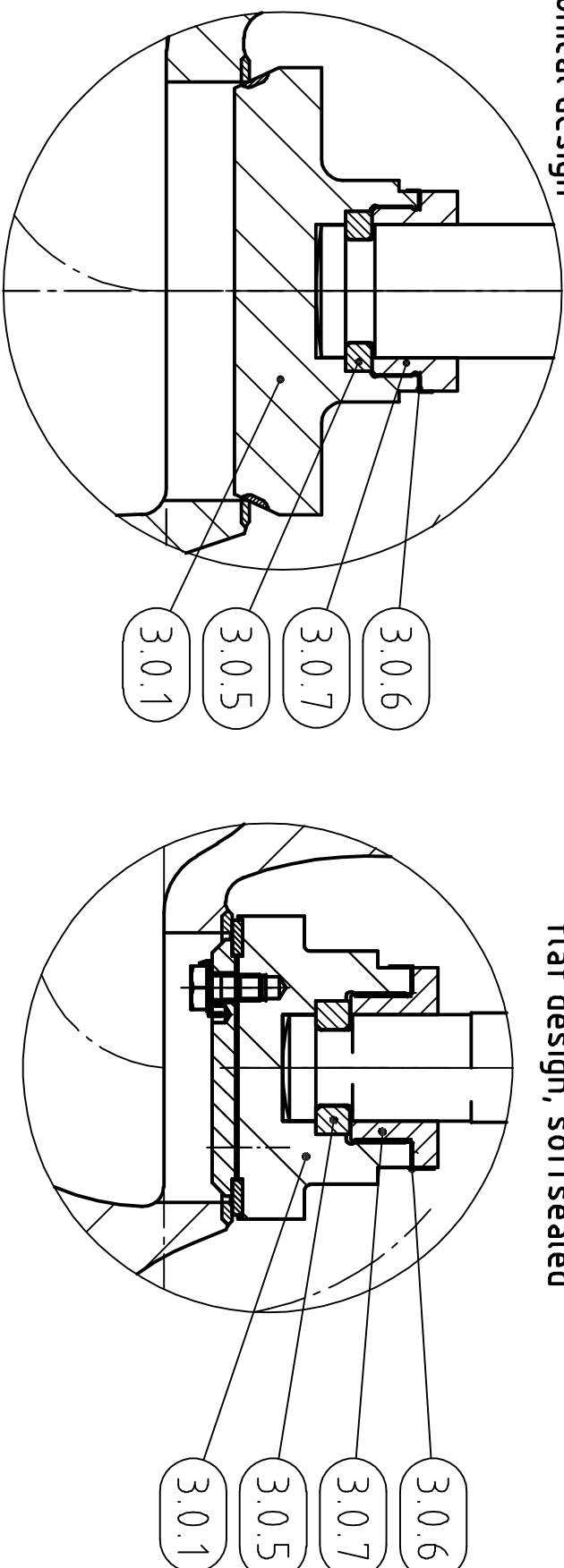
- drawing turned 15°
- drawing turned 30°
- 1.0.0
- 3.0.7
- 3.0.6
- 3.0.5
- 3.0.1
- 2.4.1
- 2.4.11
- 2.2.5
- 4.0.1
- 5.0.2
- 2.1.2
- 5.0.1
- 5.0.2
- 2.2.1
- 2.2.3
- 2.2.6

	Standard	alternative materials *	Standard *	alternative materials *	Standard *	alternative materials *	
1.0.0	Body	1.6220/LCB/LCC	LC1 LF2	1.4408/CF8M	Hastelloy C276/2.4819 A995 Grade 4A/1.4470 CF3M 1.4404 1.4571	1.0619/WCB/WCC	1.0460
2.1.2	Bonnet	Seat Stellite 21	Seat Stellite 21	Seat Stellite 21	Seat Stellite 21	Seat Stellite 21	
		1.6220/LCB/LCC	1.0566 LC1 LF2	1.4408/CF8M	1.4401 Hastelloy C-276/2.4819 A995 Grade 4A/1.4470 CF3M 1.4404 1.4571	1.0619/WCB/WCC	1.0460
2.2.1	Stern lower part	1.4571	2.4819	1.4571	2.4819	1.4571	2.4819
2.2.3	Bellows	2.4819	1.4571 2.4856	2.4819	1.4571 2.4856	2.4819	1.4571 2.4856
2.2.5	Bellows Connection Parts	2.4819	1.4571	2.4819	1.4571	2.4819	1.4571
2.2.6							
2.4.1 (2.4.11)	Gland Packing	PTFE	Graphit	PTFE	Graphit	PTFE	Graphit
3.0.1 3.0.5 3.0.6 3.0.7	Plug	1.4571	1.6220 (1.0566) 2.4819	2.4819	2.4819	2.4819	
	hardfaced with Stellite 6	hardfaced with Stellite 6 all plugs are softsealed available	hardfaced with Stellite 6	hardfaced with Stellite 6 all plugs are softsealed available	hardfaced with Stellite 6	all plugs are softsealed available	
4.0.1	Gasket	1.4571/PTFE	2.4819/PTFE 1.4571/Graphit 2.4819/Graphit	1.4571/PTFE	1.4571/Graphit	1.4571/PTFE	1.4571/Graphit
5.0.1	Stud Bolts	A 320 Grade L7M - OC	DIN976 1.7225 GC OC A 193 Grade B7 - OC DIN 976 A4 - 70	A 320 Grade L7M - OC	DIN976 1.7225 GC OC A 193 Grade B7 - OC DIN 976 A4 - 70	A 320 Grade L7M - OC	DIN976 1.7225 GC OC A 193 Grade B7 - OC DIN 976 A4 - 70
5.0.2	Nuts	A 194 Grade 7 - OC A 194 Grade 7M - OC	EN ISO 4032 1.7218/KG OC A 194 Grade 2 H - OC DIN 934 A4 - 70	A 194 Grade 7 - OC A 194 Grade 7M - OC	EN ISO 4032 1.7218/KG OC A 194 Grade 2 H - OC DIN 934 A4 - 70	A 194 Grade 7 - OC A 194 Grade 7M - OC	EN ISO 4032 1.7218/KG OC A 194 Grade 2 H - OC DIN 934 A4 - 70

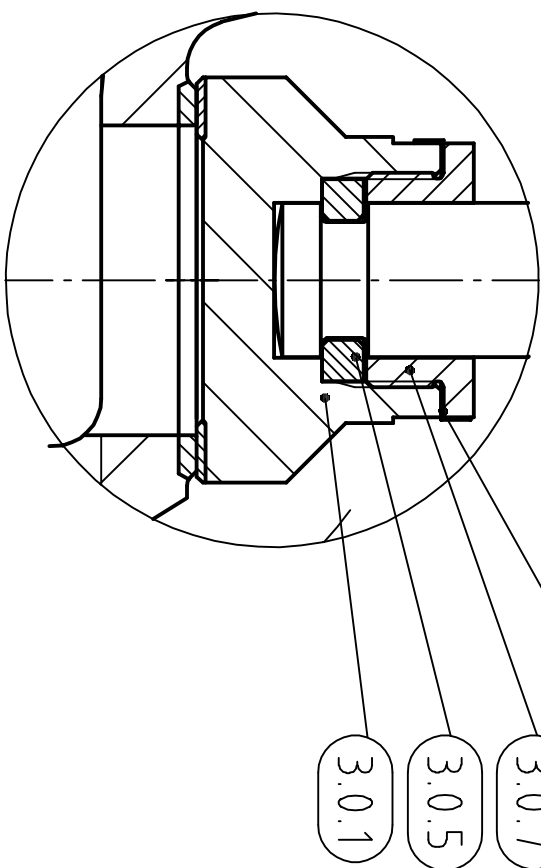
* alternative materials of construction not covered by GEST 17/492

Plug sealing design:
conical design

alternative available plug sealing design:
flat design, softsealed



alternative available plug sealing design:
flat design, hardfaced



BSG-VALVE PN 16/40			BSG-VALVE-BVF Class 300			BSG-VALVE-BVF Class 150		
Size *	Length L		Size *	Length L		Size *	Length L	
DN15	130		1/2"	152		1/2"	152	
DN20	150		3/4"	178		3/4"	178	
DN25	160		1"	203		1"	127	
DN40	200		1.5"	229		1.5"	165	
DN50	230		2"	267		2"	203	
DN80	310		3"	318		3"	241	
DN100	350		4"	366		4"	292	
DN125	400		5"	400		5"	356	
DN150	480		6"	444		6"	406	
DN200	600		8"	559		8"	495	
DN250	730		10"	622		10"	622	
DN300	850		12"	711		12"		
DN350	980		14"	980				
DN400	1100		16"	1100				

BSG-VALVE-BVF Class 300			BSG-VALVE-BVF Class 150		
Size *	Length L		Size *	Length L	
1/2"	140		1/2"	152	
3/4"	152		3/4"	178	
1"	165		1"	127	
1.5"	190		1.5"	165	
2"	216		2"	203	
3"	282		3"	241	
4"	305		4"	292	
	403		5"	356	
			6"	406	
			8"	495	
			10"	622	
			12"	698	

BSG-Valve-BVF Class 150		
Rating:	ASME B16.34 Class 150	
Face to Face:	ASME B16.10 Table 1 Col. 18	
Flanges:	ASME B16.5 Class 150	

02	Changed from 06/318 to GEST 17/492	12.03.2021	VNell
01	Table Class150 BVF deleted, other tables revised	20.02.2020	VNell
Index / Altering / Revision			
Bellores Sealed Globe Valve			
ECT135 G-FL DN15 - DN40 PN16/40 -AM			
ECT135 G-FL DN15 - DN40 PN16/40 -AM			
ECT135 G-FL 1/2" - 16" Class 300 GVF/BVF and Class 150 BVF-AM			
Sealing surface inlet:		EN 1091/ASPE B16.5	
Sealing surface outlet:		EN 1092/ASPE B16.5	
Operation:		pneumatic actuator	

Date		Name	
Signed 16.09.2017	VNell	Signed 16.09.2017	Handlner
List item:		Order-number:	
Drawing-number:		Scale:	

WTA
W.T.A. / XOMOX
Verkehrsring Str.15
88131 Lindau

85730REV. 02
15

All rights reserved acc. to DIN 33